

**TFP/HEPA**  
AIR CLEANERS

**LIFEBREATH**<sup>®</sup>  
INDOOR AIR SYSTEMS

*Breathe*  
easy...

... with the NEW Whole House  
TFP and HEPA Air Cleaner



Setting a new standard  
for energy efficient, clean air homes



Visit us at [www.lifebreath.com](http://www.lifebreath.com)

## Lifebreath TFP + HEPA: Revolutionizing home air cleaning, combining two particle capture technologies to ensure clean, healthy air throughout your home.

In the Lifebreath Air Cleaner the walls of the internal airway through which dirty air passes are made of a fabric which traps particles as they are flung out of the airstream. The result is a high rate of removal of even the smallest particles, with no loading of the primary TFP cartridge to obstruct air flow.

### Research has proven Lifebreath more effective than other air cleaners

In test results confirmed by Air Filter Testing Laboratories Inc., the TFP air cleaner outperformed four competitive air cleaners during a 14 month trial.

### TFP + HEPA = long lasting 99.97% clean air

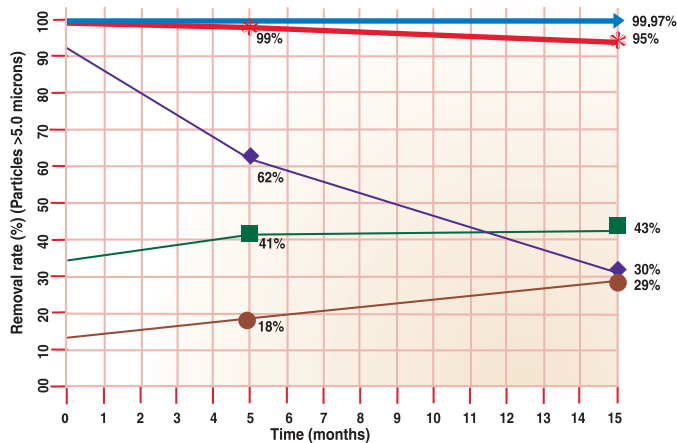
The particle capture efficiency and non-loading characteristics of the TFP primary cartridge ensures maximum HEPA (High Efficiency Particle Arrestance) performance and filter life.



### Lifebreath/HEPA Air Cleaner particle capture rate

|                            | .5 microns   | 1.0 microns | 5 microns |
|----------------------------|--|-------------|-----------|
| Lifebreath TFP 3000        | 90%  | 96%         | 99.9%     |
| Lifebreath TFP 3000 + HEPA | Filter performance 99.97% at .3 microns.<br>System Efficiency: MERV 15 |             |           |

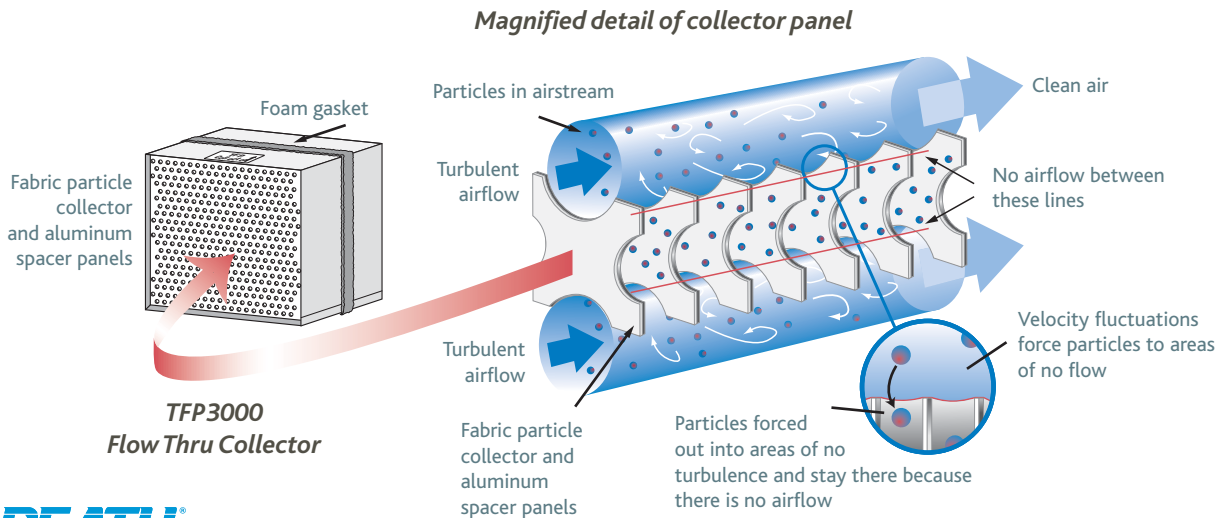
Air Cleaner Performance



- ▶ Lifebreath TFP + HEPA air cleaner. Performance does not decay.
- \* Performance of Lifebreath Air Cleaner. Minor efficiency drop at end of test.
- Typical deep pleated media filter performance. Particle-stopping ability is comparatively low.
- ◆ Popular brand of electronic air cleaner. Significant performance drop.
- Self-charging electrostatic filter. Lowest performance in test.

Note: Efficiency x Initial Airflow = Removal Rate Drop-off in efficiency of media and electrostatic filters is due to decrease in airflow as they load with particles.

## The TFP (Turbulent Flow Precipitation) Principle



## Millions of airborne particles are making the air in your home dangerous

According to the Environmental Protection Agency, the air inside our homes can be as much as 10 to 70 times more polluted than the air outside. So it comes as no surprise that respiratory problems have risen dramatically in recent years.

### Indoor air quality

The air in your home is loaded with pollen, dust, pet dander, dust mites and their droppings, plus many other health-threatening particles. In today's tighter built, better insulated homes, poor air quality can be compounded with gaseous pollutants, odors and humidity that result in mold and mildew, putting your family's health at risk.

### Chronic respiratory disorders

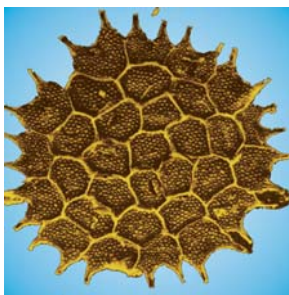
Some of these particles trigger life-long allergies, some are carcinogenic, and all put an extra burden on the body's immune system. Small particles lodge in the lining of the lungs and contribute to higher levels of chronic respiratory disorders.

### Lifebreath removes even sub-microscopic particles

You'll get maximum benefit from your Lifebreath Air Cleaner if it runs continuously. A timer can be used to save energy if the house is left empty for extended periods.



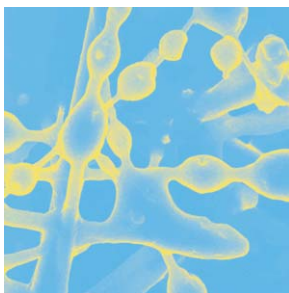
Lifebreath's TFP Collector, combined with a HEPA filter, stops 99.97% of all particles such as pollen and fungus spores, cigarette carcinogens and carbons, pet dander, dust mite feces, molds and bacteria as small as 0.3 microns in size.



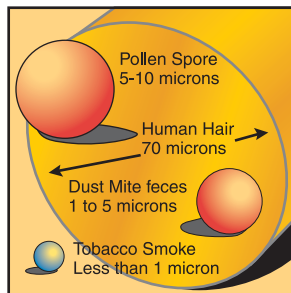
**Large-size particles**  
Pollen spore 5-100 microns



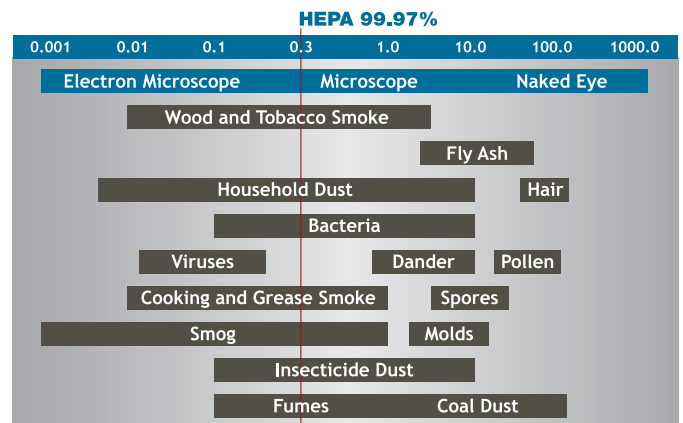
**Mid-size particles**  
Dust mite feces .3-10 microns



**Sub-microscopic particles**  
Household dust  
.001-10 microns



**Relative Particle Size**  
Particles are measured in microns. A human hair is about 50 to 100 microns in diameter.



### **Will it work in any kind of home?**

The Lifebreath Air Cleaner works with all central air heating/cooling systems. The portable model can be used to service a single room or suite without duct work.

### **Will it affect the performance of my air distribution system?**

No, Lifebreath is self-powered, and is normally installed in a by-pass configuration.

### **How can a by-pass system clean all the air in the house?**

In an average 2500 sq. ft. home, all the air passes through the furnace 4.5 times every hour. With Lifebreath in a by-pass configuration, drawing off 10% of the air continuously, 45% of the air will be cleaned every hour. Depending on the condition of the home, all the air will pass through the Lifebreath Air Cleaner 10 times every 24 hours.

### **Does it have to run continuously to keep the air clean?**

You'll get maximum benefit from your Lifebreath Air Cleaner if it runs continuously. A timer can be used to save energy if the house is left empty for extended periods.

### **Will I still need filters in my furnace?**

Yes, as they help keep your furnace free of dust and dirt and by intercepting large particles they reduce the load on the Lifebreath unit. This helps it to do what it does best – trap the very small particles that pass through the furnace filter.

### **How much maintenance is needed?**

We recommend an annual check-up to make sure the fan and motor are in good operating condition. The collectors and HEPA filters should be checked and replaced as necessary. No cleanout is needed. Unlike other air cleaners, Lifebreath's TFP Collector is used as a pre-filter, so the HEPA filter, and in fact the whole unit, need less maintenance.

### **Will we dust and vacuum less often?**

The Lifebreath Air Cleaner removes almost 100% of the larger particles circulating in the air, and that will make a distinct difference to the amount of visible dust in the home.

### **Five reasons why...**

...the Lifebreath Air Cleaner with TFP will give you greater long-term protection than any other type of whole house residential air cleaner.

1. Lifebreath removes health-threatening particles from the air far more effectively than other residential air cleaners.
2. Lowest maintenance air cleaner available. Check-up required only once a year.
3. It cleans the air throughout your home, benefiting everyone in the family, all the time.
4. It allows air to circulate freely without putting any extra load on your air distribution system.
5. Unlike electronic air cleaners, Lifebreath does not generate any poisonous ozone which attacks your lungs.

### **Clean air with Lifebreath®**

The TFP ultimate air cleaner forms part of an excellent strategy for improving indoor air quality (IAQ). To achieve best results three steps are essential:



1. Elimination (remove pollutant causing items with a Lifebreath TFP)
2. Ventilation (introduce fresh air with a Lifebreath HRV or ERV)
3. Filtration (clean the air with a Lifebreath TFP ultimate air cleaner)



Setting a new standard for energy efficient, clean air homes



Airia Brands Inc.  
511 McCormick Blvd.  
London, Ontario, Canada N5W 4C8  
519-457-1904  
www.lifebreath.com

